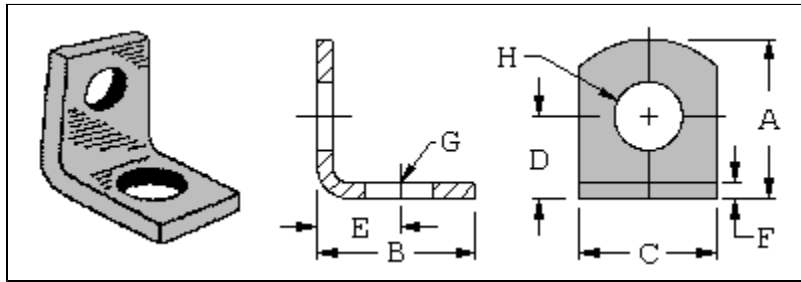


Non-Threaded Mounting Brackets

Brass • Steel



Cat. No.	Inches [mm]								Material Finish
	"A"	"B"	"C"	"D"	"E"	"F"	"G" Dia.	"H" Dia.	
633	.375 [9,53]	.375 [9,53]	.281 [7,14]	.218 [5,54]	.218 [5,54]	.032 [0,81]	.140 [3,56]	.140 [3,56]	Brass Nickel Plate
613	.390 [9,91]	.453 [11,51]	.375 [9,53]	.234 [5,94]	.299 [7,59]	.032 [0,81]	.128 [3,25]	.147 [3,73]	Brass Nickel Plate
615	.420 [10,67]	.343 [8,71]	.281 [7,14]	.281 [7,14]	.203 [5,16]	.032 [0,81]	.125 [3,18]	.144 [3,66]	Brass Tin Plate
4335	.562 [14,27]	.562 [14,27]	.500 [12,70]	.412 [10,46]	.411 [10,44]	.062 [1,57]	.120 [3,05]	.120 [3,05]	Steel Nickel Plate
4336	.562 [14,27]	.562 [14,27]	.500 [12,70]	.412 [10,46]	.412 [10,46]	.062 [1,57]	.144 [3,66]	.144 [3,66]	Steel Nickel Plate
618	.628 [15,95]	.628 [15,95]	.375 [9,53]	.378 [9,60]	.378 [9,60]	.050 [1,27]	.169 [4,29]	.169 [4,29]	Brass Tin Plate
619	.687 [17,45]	.687 [17,45]	.375 [9,53]	.500 [12,70]	.500 [12,70]	.032 [0,81]	.144 [3,66]	.144 [3,66]	Steel Tin Plate
4326	1.013 [25,73]	.487 [12,37]	.312 [7,92]	.812 [20,62]	.332 [8,43]	.050 [1,27]	.140 [3,56]	.140 [3,56]	Steel Nickel

									Plate
620	1.156 [29,36]	.656 [16,66]	.375 [9,53]	.906 [23,01]	.420 [10,67]	.032 [0,81]	.169 [4,29]	.169 [4,29]	Steel Tin Plate

[Click to Request Samples](#)

